

Pyogenic granuloma

Category(ies): Cornea, External Eye Disease

Contributor: [David A. Ramirez, MD](#), [Heather A. Stiff, MD](#), [Mark A. Greiner, MD](#)

Photographer: Jody Troyer, CRA

A pyogenic granuloma is characterized as a pedunculated vascular lesion, and appears as a fleshy red or pink mass. It is often located on the eyelid and bleeds easily with minimal contact. Clinically, it arises with rapid growth in an area of previous trauma, surgery, or inflammation. Histologically, it is composed of granulation tissue, capillaries, and non-granulomatous inflammatory cells [1,2]. Recommended treatment is excision of the lesion at its base.



Figure 1. Slit lamp photograph of the left eye shows a nasal bulbar pyogenic granuloma with surrounding conjunctival injection. Pathology showed that underlying changes were consistent with pterygium or pingueculum. The overlying area of acute hemorrhage and fibrosis was thought to be due to digital trauma from rubbing.

[Enlarge](#)

[Download](#)

Contributor: [Jesse Vislisel, MD](#)

Photographer: Antoinette Venckus, CRA

Pyogenic granulomas are formed when there is abnormally vigorous proliferation of granulation tissue. They appear as vascular growths with smooth surfaces, usually at the site of previous ocular surgery.

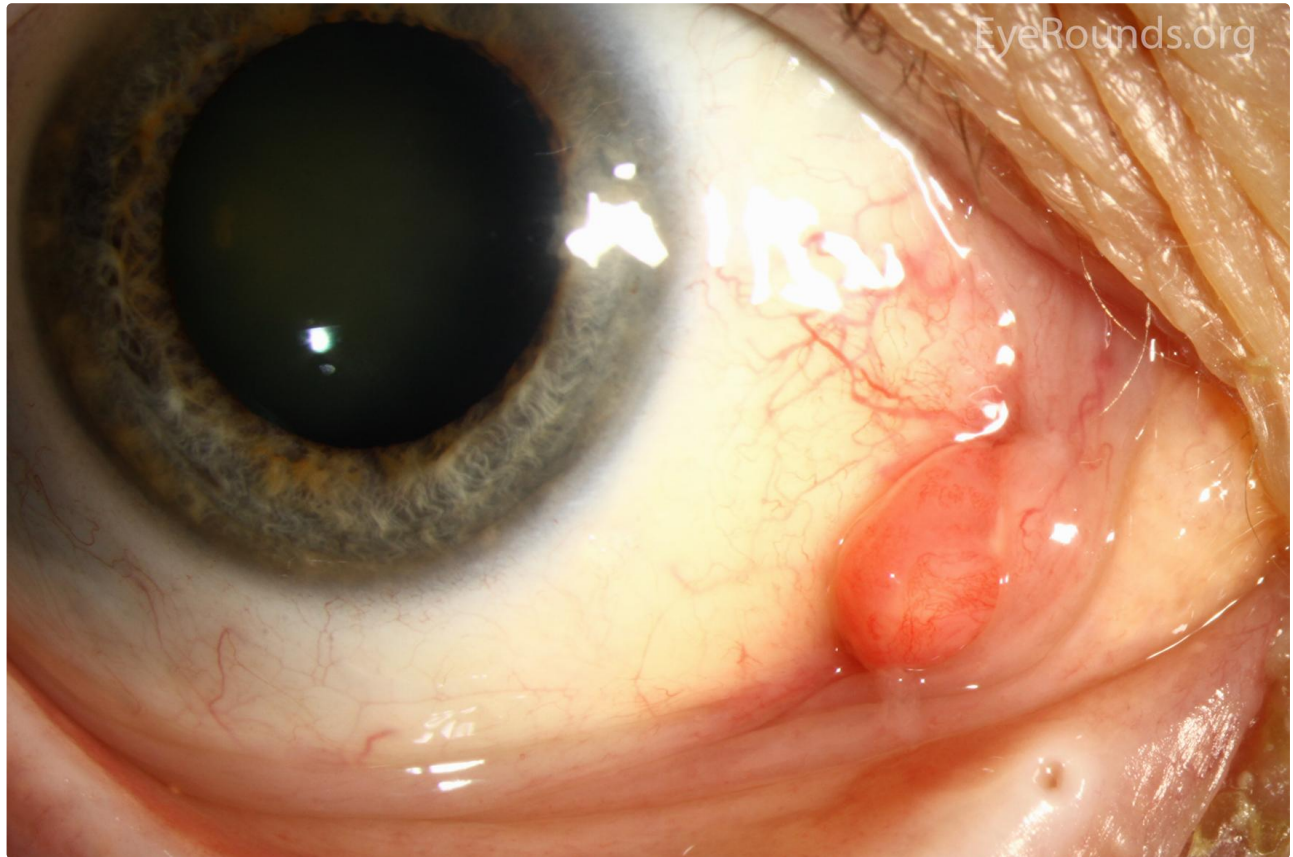
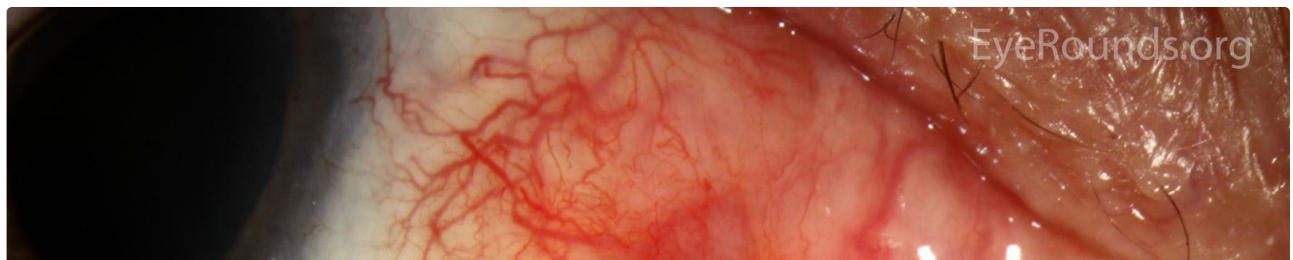


Figure 2: The patient in these photographs developed this lesion after undergoing a scleral buckle procedure for the repair of a retinal detachment. The growth was later excised and pathology findings were consistent with pyogenic granuloma.

[Enlarge](#)

[Download](#)



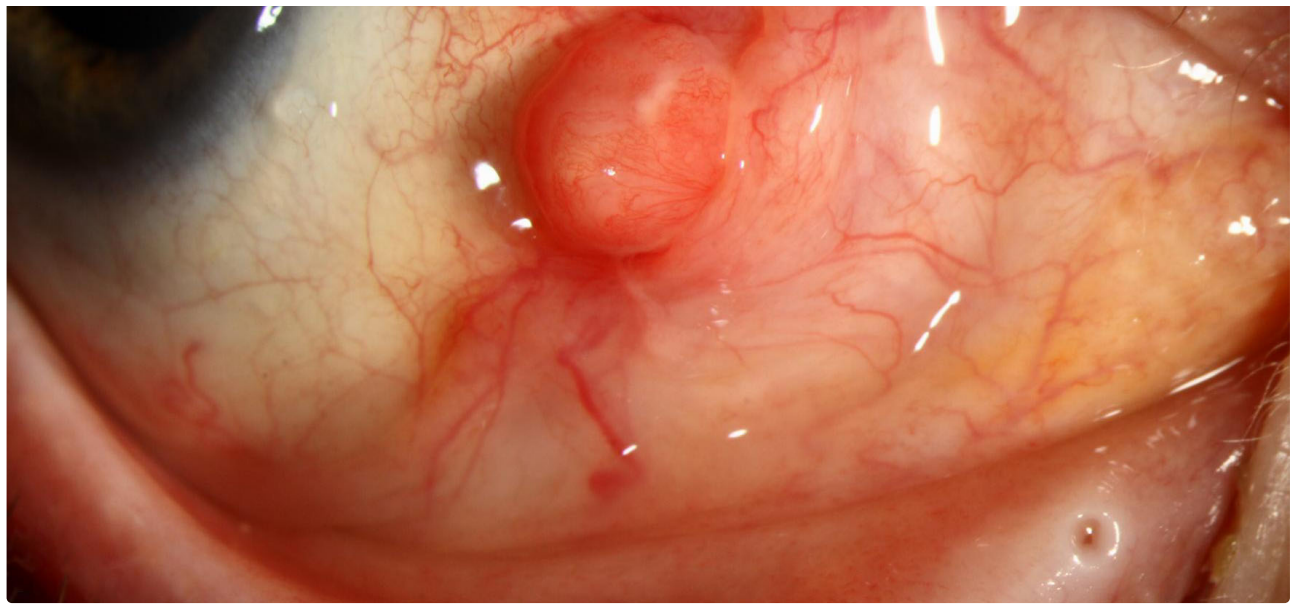


Figure 2: The patient in these photographs developed this lesion after undergoing a scleral buckle procedure for the repair of a retinal detachment. The growth was later excised and pathology findings were consistent with pyogenic granuloma.

[Enlarge](#)

[Download](#)

Contributor: [Tressa Larson, OD, FAAO](#)

Photographer: [Mark Greiner, MD](#)

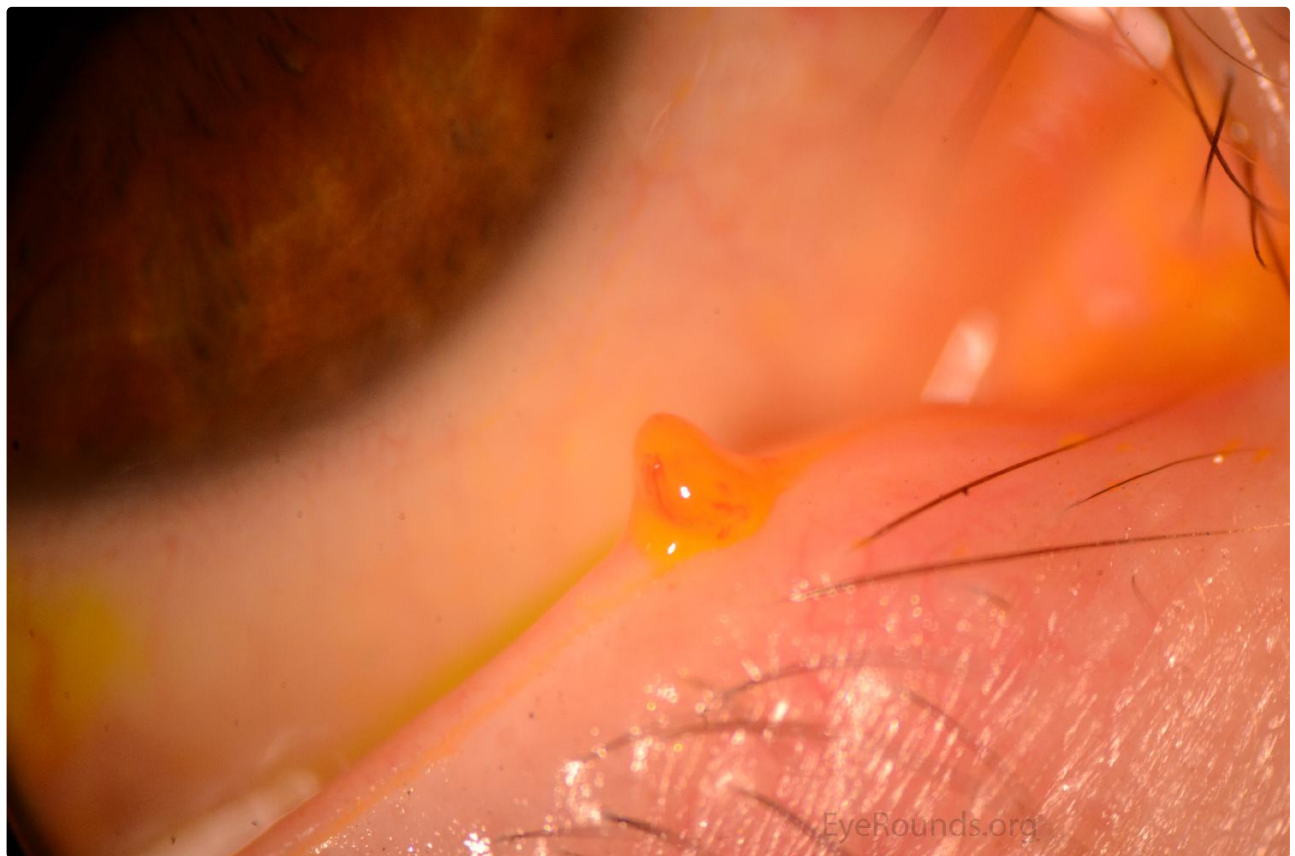


Figure 3: These photos are from a patient who had previously had intracanalicular punctal plugs.

[Enlarge](#)

[Download](#)



Figure 3: These photos are from a patient who had previously had intracanalicular punctal plugs.

[Enlarge](#)

[Download](#)

Contributor: [Tressa Larson, OD, FAAO](#)

Photographer: [Mark Greiner, MD](#)



Figure 4: This lesion occurred a few months after undergoing canalicular repair. The lesion was surgically excised and the pathology specimen showed extensive granulation tissue with parenchymal hemorrhage.

[Enlarge](#)

[Download](#)

Reference:

- Mannis MJ, Holland, Edward J. Cornea; Fundamentals, Diagnosis, and Management. Fourth ed: Elsevier, 2017.
- Neff A, Chahal H, Carter KD. Benign Eyelid Lesions Ophthalmology. Fifth ed: Elsevier 2019.

Image Permissions:





Related Articles



EyeRounds.org

[Related Atlas Entry: Granuloma pyogenicum](#)

Address

University of Iowa
Roy J. and Lucille A. Carver College
of Medicine
Department of Ophthalmology and
Visual Sciences
200 Hawkins Drive
Iowa City, IA 52242

[Support Us](#)

Legal

Copyright © 2019 The University of
Iowa. All Rights Reserved
[Report an issue with this page](#)
[Web Privacy Policy](#) |
[Nondiscrimination Statement](#)

Related Links

[Cataract Surgery for Greenhorns](#)
[EyeTransillumination](#)
[Gonioscopy.org](#)
[Iowa Glaucoma Curriculum](#)
[Iowa Wet Lab](#)
[Patient Information](#)
[Stone Rounds](#)
[The Best Hits Bookshelf](#)

EyeRounds Social Media

Follow



Receive notification of new cases,
[sign up here](#)
[Contact Us](#)
[Submit a Suggestion](#)